



CENTRE FOR ENTREPRENEURSHIP

RAPID INCUBATOR

By: Kwanele G Mkhwanazi
Centre Manager/Director

OVERVIEW



1. Background
2. Vision & Mission
3. Initial funding
4. Location
5. Services offered
6. Incubation model & duration
7. The centre designs
8. Governance and management
9. Legal status
10. Partnerships
11. Conclusion

BACKGROUND



- Sekhukhune TVET College entered into a partnership with Seda on the 25 February 2020 to establish the Centre for Entrepreneurship and Rapid Incubator (CfERI) to be based at Sekhukhune TVET college, CS Barlow Campus, Motetema in Groblersdal.
- The purpose of the Centre is to turn job seekers (vocational skilled students/graduates) into job creators. We aim to develop self-sustainable entrepreneurs (start and grow) who can make a contribution to the economy of Sekhukhune District (ultimately the country) and to become fully-fledged and legally complying economically sustainable SMEs. This will contribute to alleviate poverty and address the high youth unemployment rate in the Sekhukhune district.
- The Centre is developed to promote and develop young entrepreneurs from Sekhukhune TVET College and around the district.
- The centre is strategically located within the CS Barlow Campus with the College being the partner of the dtic for the establishment of a Specialised Industrial Facility (SIF) to train the small Panel Beaters and also afford them space to operate as and when they need the advanced equipment. Also the college being the Centre of Specialization in Carpenter and Joiner, these college programmes will provide a pool of innovative students/graduates and young people for the CfERI to incubate and develop. Over and above this local municipalities within Sekhukhune District have individuals with the potential to take part in the programmes of the centre.

VISION, MISSION & VALUES



Motto

- An entrepreneur's best friend.

Vision

- To be a leading hub for SMMEs and entrepreneurship prosperity unleashing innovation while creating sustainable ventures.

Mission

- We provide innovative business development services through technology-based solutions to accelerate the growth of globally competitive enterprises.

Values

- Integrity
- Drive
- Team work
- Respect
- Commitment
- Professionalism

LOCATION OF CENTRE

- The Centre is located at Sekhukhune TVET College which is geographically situated in the Sekhukhune District Municipality, at Motetema in Groblersdal with, with two campuses CS Barlow which is situated about 13km North of Groblersdal town surrounded by farms and CN Phatudi is 17km North of Burgersfort town in Praktiseer village surrounded by mines. Ape satellite Campus of CS Barlow Campus former Sekhukhune College of Education is situated at Ga-Nchabeleng.

We are here



SERVICE OFFERINGS



Centre offers an Innovation Space + Makerspace

Usage and hire specialised equipment and tools

Shared administrative or office space

Business and entrepreneurial trainings

Sales & funding Pitching skills

High-speed internet access

Networking and linkages opportunities (seminars & workshops)

Business support services (registrations with relevant industry bodies, assistance with Marketing, accounting finance, HR, systems)

E-commerce/online solutions

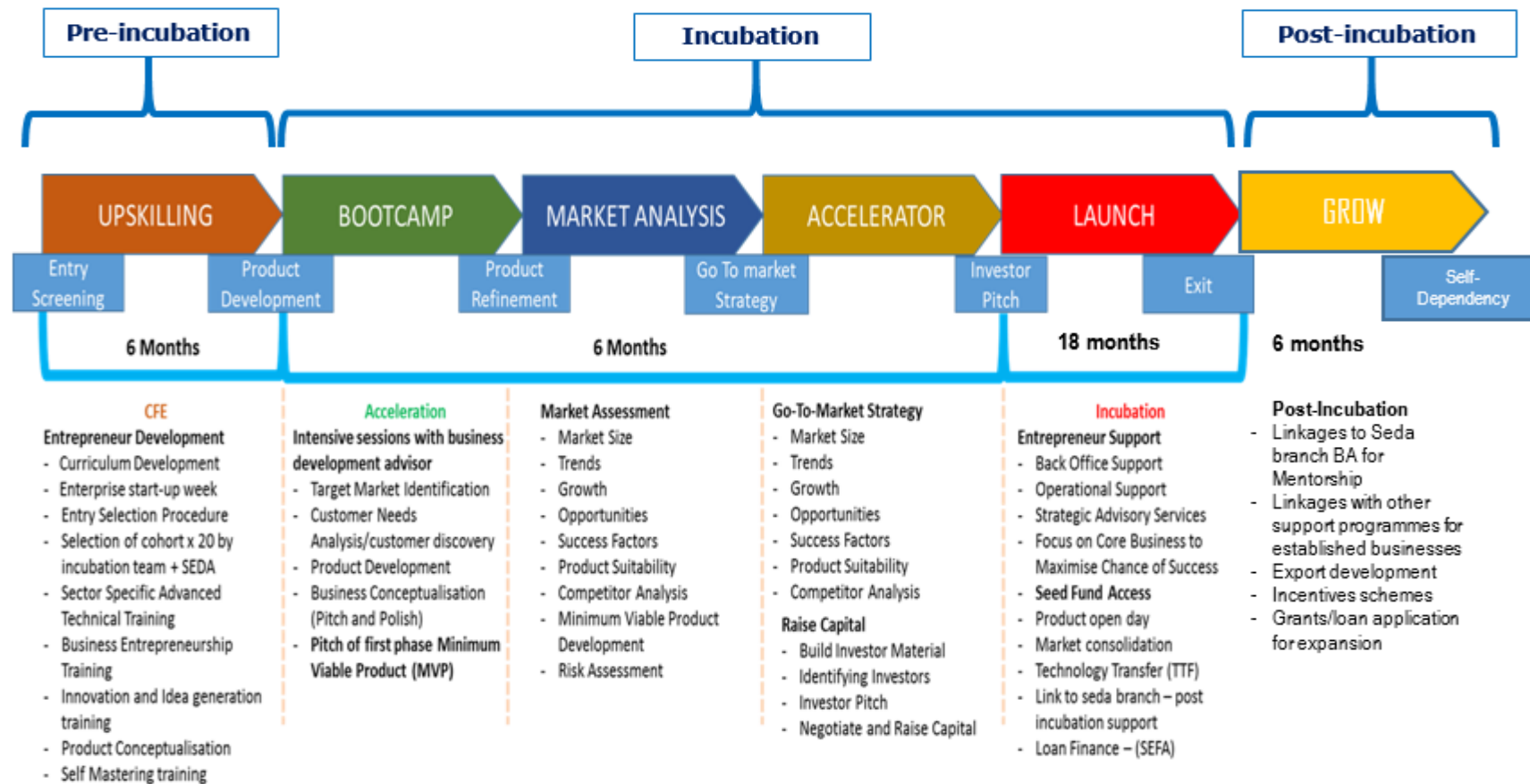
Assistance with access to markets through our partners

Assistance with access to finance (through government support programmes, seed funders, venture capitalists, business angels)

Coaching and mentorship by experts in the field

INCUBATION MODEL & DURATION

- Sekhukhune TVET college CfERI uses adopt an adjusted Seda (STP) Rapid Incubation Model, including post-incubation support extended to graduates.



INCUBATION TOOLS



THE CENTRE ON COMPLETION

- Once completed our centre will look like this;



THE CENTRE ON COMPLETION

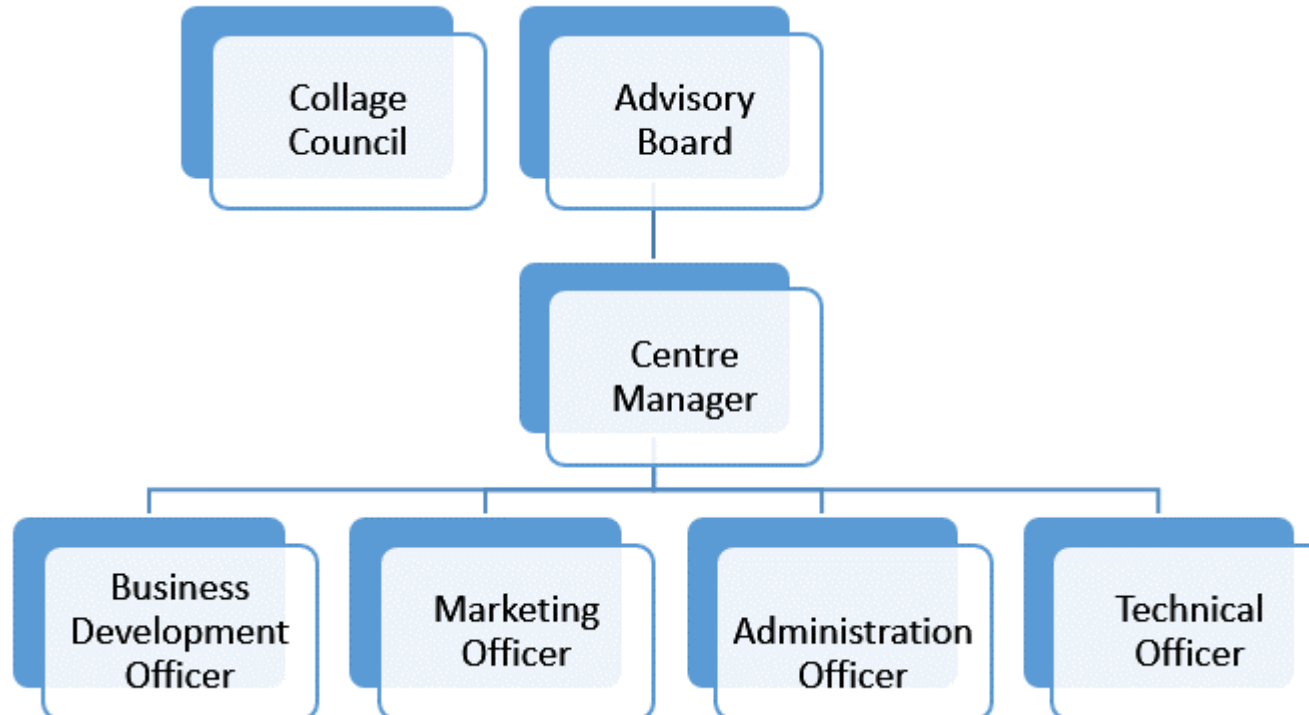

**CENTRE FOR
ENTREPRENEURSHIP**
RAPID INCUBATOR



GOVERNANCE AND MANAGEMENT

- **Organogram**

Centre is managed by a Centre Director/Manager reporting to the college Principal who acts as the Chairperson of the Advisory Board of the Centre. Centre Director is support by a team of competent personnel.



LEGAL STATUS



- The Centre is an entity of Sekhukhune TVET College, it is however independently with the Centre Manager/Director as its accounting officer. The Centre is accountable to the College Council through the Principal and Advisory Board (AB) chaired by the college Principal. The Centre operates on effective, efficient and transparent financial and management and internal control systems. The centre will ensure compliance to where necessary and applicable to;
 - Seda STP (related incubation policies and procedures)
 - Public Finance Management Act (PFMA)
 - King IV Report on Corporate Governance for South Africa
 - Department of Higher Education & Training (policies, procedures & instructions)
 - Department of Small Business Development (policies, procedures & instructions)
 - Partners' agreements/contracts

PARTNERSHIPS



- The Centre currently partners with;



JOIN US



HOW YOU CAN APPLY

1. Apply to for enrolment as an incubatee when applications open. Communications will be made through all our social media platforms as well as our website. We will also share details with all our partners when the call opens.

Follow us on our social media platforms and you'll be the first one to know when we are recruiting;



@Sekhukhune_cfe



Centre for Entrepreneurship at Sekhukhune TVET College



Centre for Entrepreneurship Rapid Incubator Sekhukhune TVET



incubatesekhukhune



CONCLUSION



- Join Sekhukhune TVET College in changing the lives of our people through the power of entrepreneurship, turning job seekers into job creators.



email

incubator@sektvetcol.co.za

THANK YOU